

ITEM

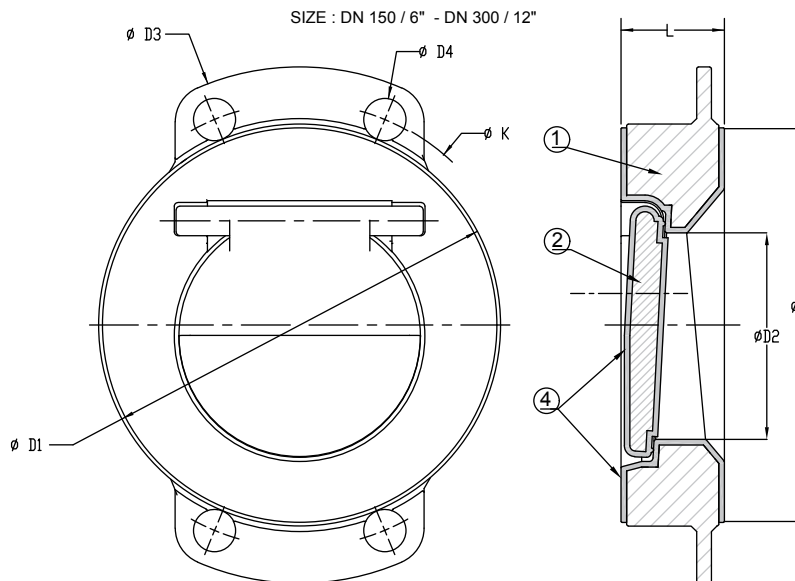
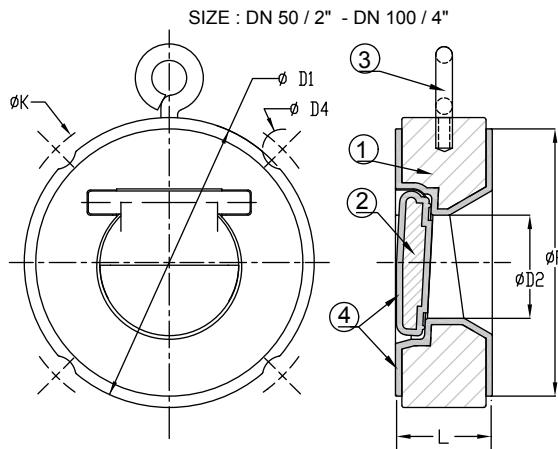
**LINED SWING CHECK VALVE**

CODE

**SCV-CS-PFA**

FORM NO.

DESCRIPTION Lined Swing Check valve sandwich type with molded lining.



Part	Descr.	Material
1	Body	CAST STEEL <input checked="" type="checkbox"/> A216 WCB <input type="checkbox"/>
2	Disc	CAST STEEL <input checked="" type="checkbox"/> A216 WCB <input type="checkbox"/>
3	Eye Bolt	<input checked="" type="checkbox"/> CARBON STEEL <input type="checkbox"/>
4	Lining	<input checked="" type="checkbox"/> PFA <input type="checkbox"/>
Suitable for Flange drilling		<input checked="" type="checkbox"/> ANSI B16.5 150# <input type="checkbox"/>
Exterior Finish		<input checked="" type="checkbox"/> Epoxy Primer+finish paint <input type="checkbox"/>

**Service conditions**

	Design	Oper.
Press. (max.), bar		
Temp. (max.), °C		
Vac. (max.), mm Hg		
Fluid		

**Testing**

Hydro	Body	16	bar
	Seat	10	bar
Spark		15	KV
Vacuum			mm Hg
Pneumatic			bar

**Notes :**

- All dimensions in inch & (mm)
- Sealing: Integrated PFA Lip Seal
- Sizes DN 50-100 with Eye bolt.  
Sizes DN 150-300 with Lugs.
- Testing as per API 598

Size	ØD1	ØD2	ØD3	ØD4	ØK	ØF	L	Lin thk (min)
2" (50)	4.33" (110)	1.10" (28)		0.75" (19)	4.75" (120.7)	3.62" (92)	1.69" (43)	0.12" (3)
3" (80)	5.43" (138)	1.93" (49)		0.75" (19)	6.00" (152.4)	5.00" (127)	1.81" (46)	0.12" (3)
4" (100)	7.09" (180)	2.83" (72)		0.75" (19)	7.50" (190.5)	6.18" (157)	2.05" (52)	0.12" (3)
6" (150)	8.58" (218)	4.41" (112)	11.02" (280)	0.91" (23)	9.50" (241.3)	8.50" (216)	2.20" (56)	0.12" (3)
8" (200)	10.83" (275)	6.18" (157)	13.50" (343)	0.91" (23)	11.75" (298.5)	10.63" (270)	2.36" (60)	0.12" (3)
10" (250)	12.99" (330)	7.80" (198)	16.02" (407)	0.98" (25)	14.25" (362)	12.76" (324)	2.68" (68)	0.12" (3)
12" (300)	15.35" (390)	9.69" (246)	19.02" (483)	0.98" (25)	17.00" (431.8)	15.00" (381)	3.07" (78)	0.12" (3)

**COMMENTS:**

**GLOBAL INDUSTRIAL EQUIPMENT, INC.**

2434 Darnell Drive Spring Valley, Ohio 45370

Phone: 888-243-8443, Fax: (937) 862-9501

Email: sales@gieinc.com, Web: www.gieinc.com